

4000A SERIES (Press-Fit Type)

FEATURE

Insulator Material : PBT UL94V-0
 Contact Material : Phosphor Bronze
 Plating : Selective Gold Plating Over Nickel On Contact Area
 100 μ " Tin Plating On Tail Section
 50 μ " Nickel Underplating

SPECIFICATION

Current Rating : 3 Ampere
 Contact Resistance : 10 milliohms maximum
 Insulation Resistance : 5000 megohms minimum
 Voltage Rating : 1800 VAC 1 minute
 Operation Temperature Range : -55°C to +105°C
 Daughter Board Insertion Force : 0.45 kgs max. per pair
 Daughter Board Withdrawal Force : 0.028 kgs min. per pair
 Contact Tail Insertion Into Hole : 40 lbs max.
 Contact Tail Retention in Hole : 10 lbs min.

ORDERING INFORMATION

4000A - □□□ - C - C - □ - N - □

Termination Type □

A : Press-Fit Type

No. of Contacts □□□

Pitch & Row to Row (R) □□□

C : Pitch 3.96 mm, Row to Row 5.08 mm

Tail Length □

C : 4.8 mm

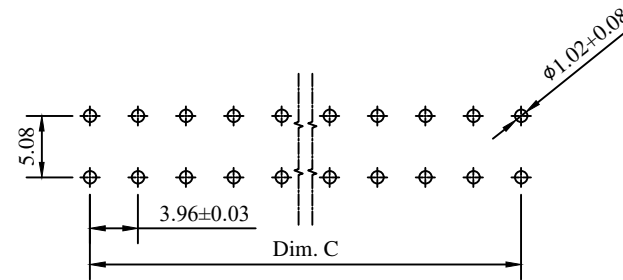
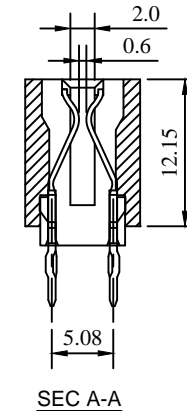
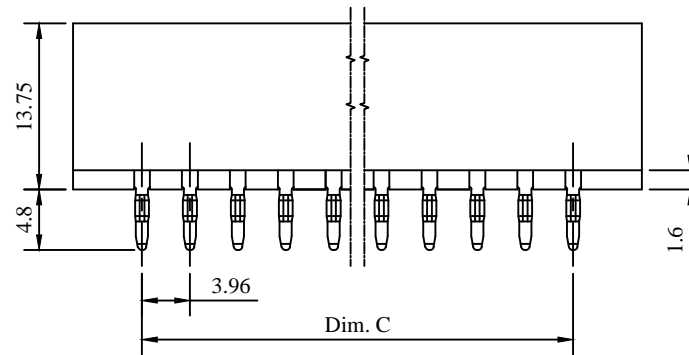
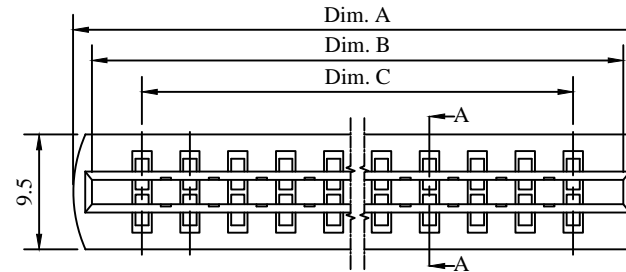
Other Custom Options □

Mounting Ears □

W : With Mounting Ears

N : No Mounting Ears

Plating Code □



RECOMMENDED PCB LAYOUT

Recommended PCB Hole

- Drilled Hole : 1.15±0.03 mm
- Copper Plate 0.025 mm min. thickness
- Tin/Lead Plating
- Finish Hole Diameter : 1.02±0.08

Plating Code

1	10 μ "
2	G/F
3	3 μ "
4	5 μ "
5	G/F Overall
6	30 μ "
7	Tin Overall
8	15 μ "
9	20 μ "

No. of Contacts	Dimensions (Dim.)		
	A	B	C
28/56	118.30	115.20	106.92
30/60	126.22	123.12	114.84
36/72	149.98	146.88	138.60
40/80	165.82	162.72	154.44
43/86	177.70	174.60	166.32
50/100	205.42	202.32	194.04

Title : Customer Drawing Type : Edgecard Connector

Part No. : 4000A Series

Description :
 Pitch 3.96 mm Edge Card Connector Press-Fit Type
 Tail Length 4.8 mm
 Without Mounting Ear

DWG No. : 010 - 0000 - 54A Date : 01 - Feb. - 2018

APPD. : James C. CHK. : Connie Z. DRW. : Bryant C.



Tolerances Unless Otherwise Specified :
 X. ± 0.50 .X ± 0.38 .XX ± 0.25
 X.° ± .X° ± .XX° ±

Dim.	Scale	Sheet	Rev.
mm	N/A	1 of 1	J